

INSTALLATION INSTRUCTIONS

DETACHABLE SISSY BAR SIDE STRAPS
F/1993-2005 FXDWG MODELS

Mfg. P/N 263625
(See pkg. label for Dist. P/N)

ATTENTION INSTALLER (if other than owner):

Please forward this instruction sheet and the warranty card to the purchaser of this product. These instructions also contain valuable information necessary to the end user.

INTRODUCTION:

These instructions describe the procedure for properly installing KHROME WERKS® DETACHABLE SISSY BAR SIDE STRAPS on 1993-2005 FXDWG Harley-Davidson® models. Review instructions carefully before beginning, as they contain important information. Please retain for future reference.

Particularly important information is distinguished in these instructions by the following notations:

NOTE: A **NOTE** provides key information to make procedures easier or clearer.

CAUTION: A **CAUTION** indicates special procedures that must be followed to avoid damage to the motorcycle or accessories.

WARNING: A **WARNING** indicates special procedures that must be followed to avoid injury or death to a motorcycle operator or person inspecting or repairing the motorcycle.

TOOLS REQUIRED:

- 1 - 5/32" hex wrench
- 1 - 1/4" hex wrench

PROCEDURE:

NOTE: Khrome Werks Detachable Sissy Bar Side Straps fit with Khrome Werks or Harley-Davidson 6 1/16" width sissy bar uprights or rails.

CAUTION:

Perform installation on one side of the bike at a time for ease of installation and to avoid possible damage to the fender when strut hardware is removed.

1. Remove factory sissy bar upright. Save upright if to be reused. Remove the two factory buttonhead screws and washers from the fender support on each side. Remove factory side plates. Discard side plates and factory hardware.
2. Cement the Plastic Sliders (item #1) into the brackets on the Khrome Werks Side Straps (item #2), using contact glue.
3. Install the special buttonhead screws through the flanged spacers (items #7, 8), then through the fender supports, frame, and into the fender.
4. Assemble the Knurled Knob (item #6) to the Side Strap, using the 1/4"-20 x 1/2" screw, chrome washer and compression spring (items #3, 4, 5). The spring goes under the washer and into the counterbore of the knurled knob.
5. Install your sissy bar upright into the Side Straps, using the 1/4"-28 x 3/4" screws provided (item #9).

NOTE: Buildup of chrome plating on fasteners may cause seizing or binding during installation. Use anti-seize lubricant to prevent this.

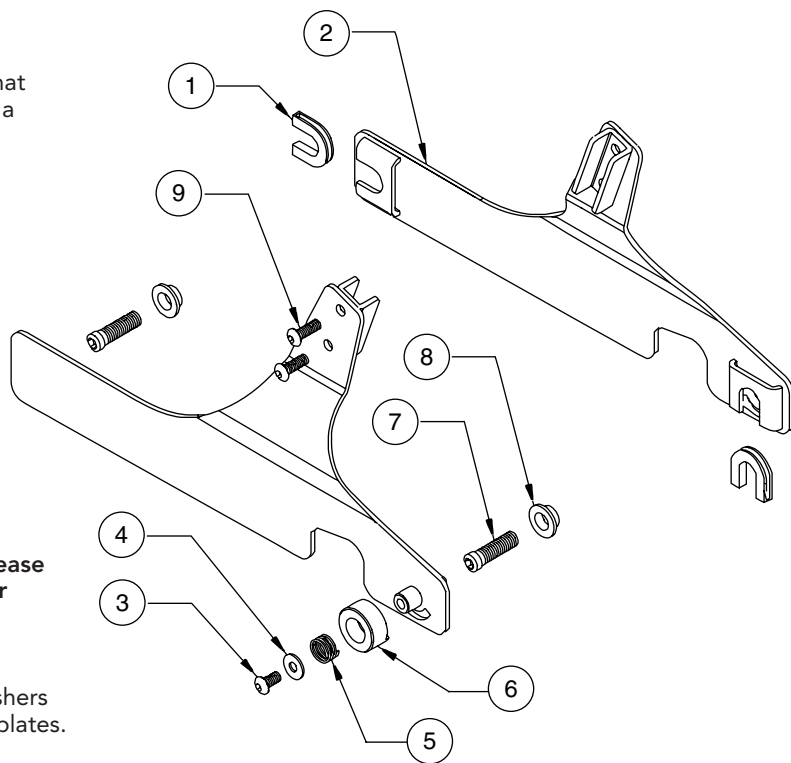
6. Install sissy bar assembly onto the bike by sliding the front mounts onto the front flanged mount first, then pulling the knurled knob out while sliding the rear mounts onto the rear flanged mount.

WARNING:

Make sure that the knurled knob seats into the slot in the Side Strap securely before riding.

USE AND CARE:

Wash your accessories with the same care you use when washing your motorcycle. Use mild soap and water. DO NOT use abrasive chemicals or cleaners, or high-pressure spray washers.



BILL OF MATERIALS:

Item #	Mfg. P/N	Description	Qty.
1	437030	Plastic Slider	4
2	263626	Side Strap, left hand	1
2	263627	Side Strap, right hand	1
3	433425	Screw, BH cap, 1/4-20 x 1/2", chrome	2
4	420313	Washer, .609 x .265 x .040, chrome	2
5	439300	Spring, compression	2
6	409800	Knurled Knob	2
7	434100	Screw, 3/8-16 x 1 1/2" special BH cap	4
8	439120	Flanged spacer	4
9	433428	Screw, BH cap, 1/4-28 x 3/4", chrome	4